

## Its Much More than Just a Wheelchair and a Cushion...Lets Find A Way to Influence Wheelchair and Seating Service Excellence

Deborah Cox OT Reg.(ONT)  
Linda Norton OT Reg.(ONT), MScCH

SHOPPERS  
HomeHealthCare



## Objectives

- During this working session participants will
  - Discuss the common interest and goal for excellence in wheelchair and seating services
  - Develop of a group of people/groups interested in influencing best practice model or standard for wheelchair and seating services.
  - Initiate the movement towards a broadly acknowledged standard of excellence for wheelchair and seating services

SHOPPERS  
HomeHealthCare



## How did we get here?

SHOPPERS  
HomeHealthCare



## Conscious Competence Model

- "To be fully competent, it is not enough just to do the right things. The practitioner must intentionally consider all the issues and be able to explain the rationale and intent behind his/her actions. Moreover, the practitioner should engage in this conscious decision-making in advance, rather than explaining after the fact"

Reference: COTO

SHOPPERS  
HomeHealthCare



## The Conscious Competence Model

- Unconscious incompetence
- Conscious incompetence
- Unconscious competence
- Conscious competence

Reference: COTO

SHOPPERS  
HomeHealthCare

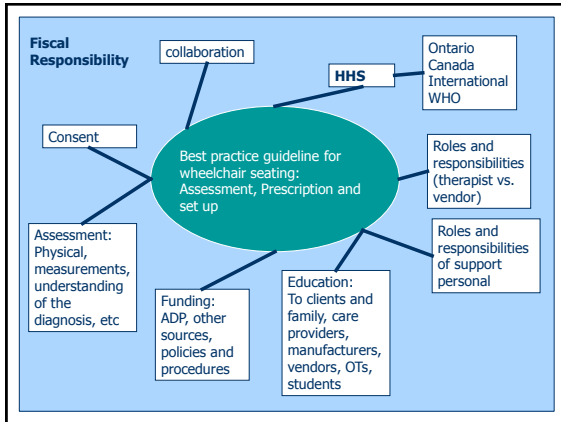


## Why do we need guidelines?

- To define best practices regarding service delivery
- To support best practice, and provide a resource to help determine if this is a role they should take on
- To ensure clients receive appropriate care
- To improve accountability in the process
- To assist with the advocacy for resources

SHOPPERS  
HomeHealthCare





## Process for this workshop

- Introduction to the concepts and key questions
- Division into working groups
- Development of consensus statements
- Voting on the consensus statements (on line)
- Publication of these first steps.

SHOPPERS  
HomeHealthCare



## Existing Statements/Guidelines

## Delivery of Equipment

- It is recommended, for any clients in need of a wheelchair or custom rehabilitation equipment, that the vendor and evaluating/prescribing occupational therapist (OT) or physical therapist (PT) be present at the time of delivery of the wheelchair or custom rehabilitation equipment at the clinic where the evaluation/prescription was performed. (Cincinnati Children's Hospital Medical Center—[www.guideline.gov](http://www.guideline.gov))

SHOPPERS  
HomeHealthCare



SHOPPERS  
HomeHealthCare



### Potential Benefits

- Improved posture and positioning
- Decrease pain
- Improved social functioning in the environment
- Reduced risk for skin breakdown, detriments to disease process related to wheelchair

### Potential Harms

- Skin issues could get worse or not improve as quickly if family waits for appointment
- Increased pain or worsening posture if waiting in a bad seating system
- Increased cost to family (i.e., insurance billed), time burden for families and providers, and travel time/cost to families
- Inconvenience to vendor

SHOPPERS  
HomeHealthCare



## Consensus statements

- Overarching principles/concepts
- Help to direct practice
- Are usually interprofessional
- Please include the benefits and potential harms
- Please include any known evidence

SHOPPERS  
HomeHealthCare



## Key Categories

- Differentiate between the role of the vendor and the role of the therapist
- Define the role of support personal (e.g. OTA,PTA, etc) in the seating and mobility assessment
- Identify the minimum education requirements for therapists, vendors etc participating in seating and mobility assessment
- Define the therapist's role in relationship to funding procurement
- Define the minimum standard for the contents of a mobility assessment

SHOPPERS  
HomeHealthCare



## Activity

- Divide into groups around your preferred category
- As a group, write potential consensus statements for that category
  - Include benefits/harms
  - Include any known research
- Choose one person in the group to provide a quick overview of the discussion to the larger group

SHOPPERS  
HomeHealthCare



## Group Reports

- Differentiate between the role of the vendor and the role of the therapist
- Define the role of support personal (e.g. OTA,PTA, etc) in the seating and mobility assessment
- Identify the minimum education requirements for therapists, vendors etc participating in seating and mobility assessment
- Define the therapist's role in relationship to funding procurement
- Define the minimum standard for the contents of a mobility assessment

SHOPPERS  
HomeHealthCare



## Next Steps

- Contact information
- Participation
- Consensus gathering – on line (open to others not in attendance at this workshop.
- Publish for comment/discussion
- Presentation at other conferences

SHOPPERS  
HomeHealthCare



## Thank You

- Deborah Cox
  - [coxd@hhsc.ca](mailto:coxd@hhsc.ca)
  - 905-521-2100 ext 77128
- Linda Norton
  - [lnorton@shoppershomehealthcare.ca](mailto:lnorton@shoppershomehealthcare.ca)
  - 416-524-2556

SHOPPERS  
HomeHealthCare

