

2011 Health Care Innovations

We Lift You UP: Safe and Effective Lift Options for the home

Presented by:

Mandy Dorans, Deanna Ferguson
and John Bragdon

SHOPPERS
HomeHealthCare



Objectives

- Identify the Lift solutions available in a Home Health Care Setting
- Highlight the advantages and drawbacks of each Lift solution

SHOPPERS
HomeHealthCare



Why?

- Change in model of care
- Care provider Safety
- Client Safety

SHOPPERS
HomeHealthCare



CHANGE in Model of Care

- The number of Canadians aged 80 and over will double in the next 20 years and TRIPLE in the next 40 years
- Forecasting of long waits, up to 3 or 4 years
- Outdated and over crowded facilities
- No choice of location and reduced services

SHOPPERS
HomeHealthCare



Care Provider Safety

- Home health care agency policy change
- Direct and indirect costs associated with back injuries in the healthcare industry are estimated to be \$20 billion annually.

SHOPPERS
HomeHealthCare



Client Safety

- Risk Management
- Skin Integrity (Pressure, Friction and Shear)
- "Falls cause more than 90% of all hip fractures in seniors and 20% die within a year of fracture" (Report on Seniors falls in Canada)

SHOPPERS
HomeHealthCare



Lift Options

- Floor
- Freestanding/Pressure Fit
- Ceiling

SHOPPERS HomeHealthCare



Floor Lift

- Remember Me?



SHOPPERS HomeHealthCare



Floor Lifts

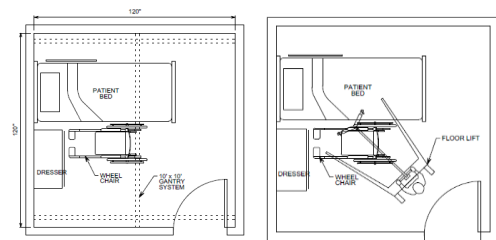
Current Floor Lift



SHOPPERS HomeHealthCare



X-Y vs Floor Lift



SHOPPERS HomeHealthCare



Key Differences? Safe Handling

Ceiling Lift (CL)

- Requires minimal force while handling client

Floor Lift (FL)

- May require a force component to push/turn especially over carpet, sloped flooring or thresholds

SHOPPERS HomeHealthCare



Key Differences? Safe Handling

Ceiling Lift (CL)

- Safely transfers clients who has fallen to floor, provided they are underneath tracking system
- Can be used to reposition in bed. X-Y style provides more flexibility

Floor Lift (FL)

- Safely transfers clients who have fallen to the floor, if boom lowers close enough to the floor
- Unable to use for repositioning

SHOPPERS HomeHealthCare



Key Differences Accessibility

Ceiling Lift

- Can be used anywhere within the area covered by tracking, including tight areas where a floor lift cannot reach
- Limited Funding options

Floor Lift

- Can access where tracking is not installed i.e hallways, dining areas



Key Differences Floor Space

Ceiling Lift

- Minimal to NO floor space is required to store/use a ceiling lift

Floor Lift

- A large amount of floor space is req'd to store and use a floor lift especially while turning



Key Differences Limitations

Ceiling Lift

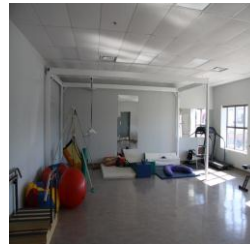
- Can reach all levels

Floor Lift

- Booms range may limit the height of the patient can be lifted
- A floor lift can tip over if the boom is pushed from it's side, if brakes are applied during lifting or if patient's centre of mass is not positioned correctly



Freestanding/Pressure Fit systems



Free-Standing Sequoia



T-Shape 3-post Bedroom system



Square 4-post covering system



SHOPPERS
HomeHealthCare



Cross shape 3-post bathroom system



SHOPPERS
HomeHealthCare



Pressure Fit



SHOPPERS
HomeHealthCare



P440



SHOPPERS
HomeHealthCare



Summary

- Options are available
- Free standing, portable and pressure fit systems have been designed to fill in the gap that permanent fixed tracking can not address
- Portability means easier trial situations, recovery/rehabilitation solutions, versatility, and more lifestyle choices for the user
- Portable lift systems have been designed to go with these tracking solutions to make the lifts user friendly for both the care giver and the client

SHOPPERS
HomeHealthCare



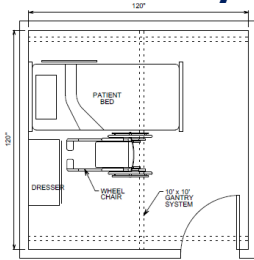
The "Ideal"

- Fixed Lift
- XY coverage
- Close proximity of all transfer sites
- All slings available for the functions required
- Docking station in a discrete yet accessible location
- Reputable manufacturer with experienced installation and service distributor
- Training

SHOPPERS
HomeHealthCare



X-Y Gantry



SHOPPERS HomeHealthCare



Ceiling Lifts



SHOPPERS HomeHealthCare



Track Configurations



SHOPPERS HomeHealthCare



Fixed Ceiling Lift style



SHOPPERS HomeHealthCare



Portable Lift Style



SHOPPERS HomeHealthCare



Ceiling Lifts basic Information

- Fixed or portable systems
- Weight capacities from 300lb -1000lb
- Ceiling mounted track, wall mounted track , free standing track and pressure fit track
- Straight, curved, turntable and XY track configurations
- Used for transfer, repositioning, support and rehabilitation
- Variety of standard slings to fit all shapes sizes and needs

SHOPPERS HomeHealthCare



Slings



SHOPPERS
HomeHealthCare



Thank-you! Thoughts and Questions



SHOPPERS
HomeHealthCare

